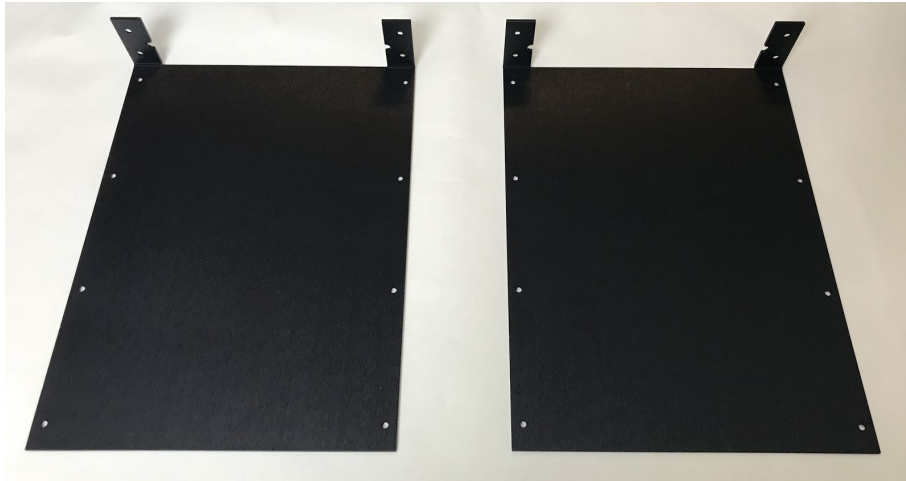


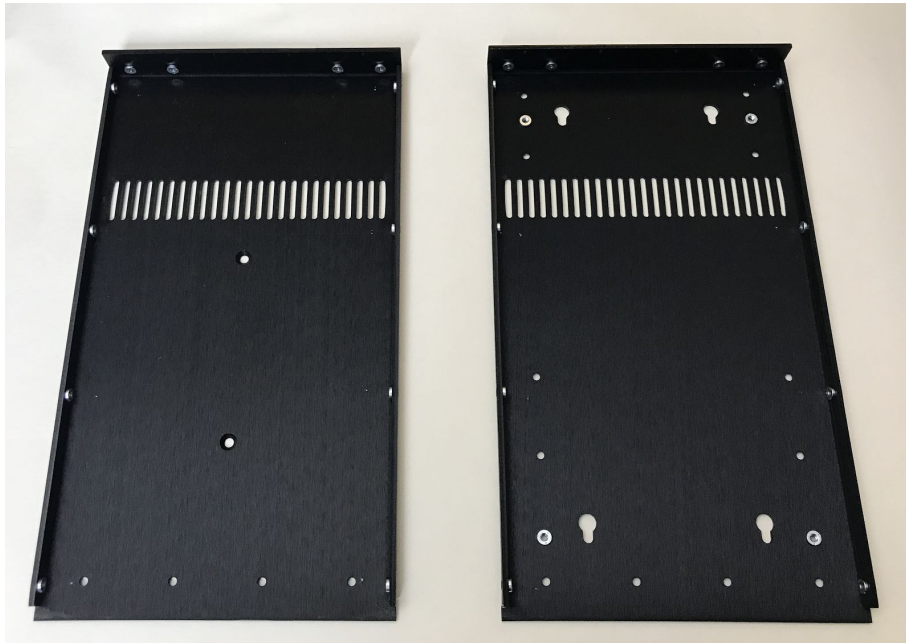
# 877 QUAD FRAME - ASSEMBLY 2/1/18

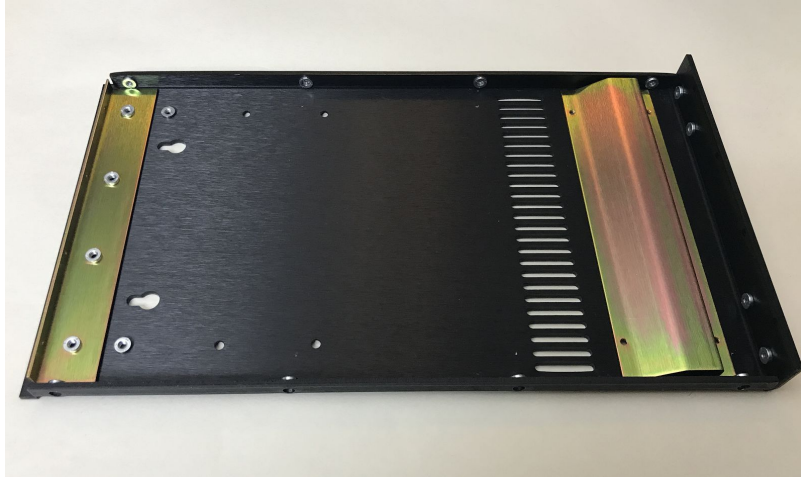
Side Panels (identical)



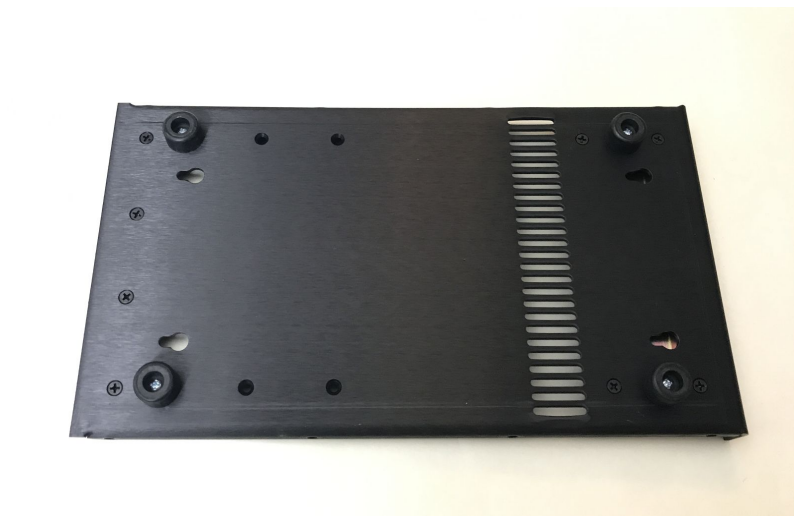
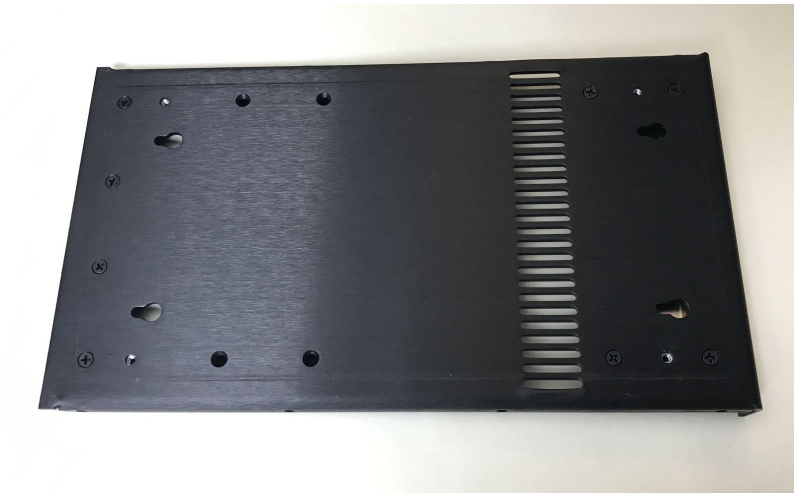
Top Tray

Bottom Tray

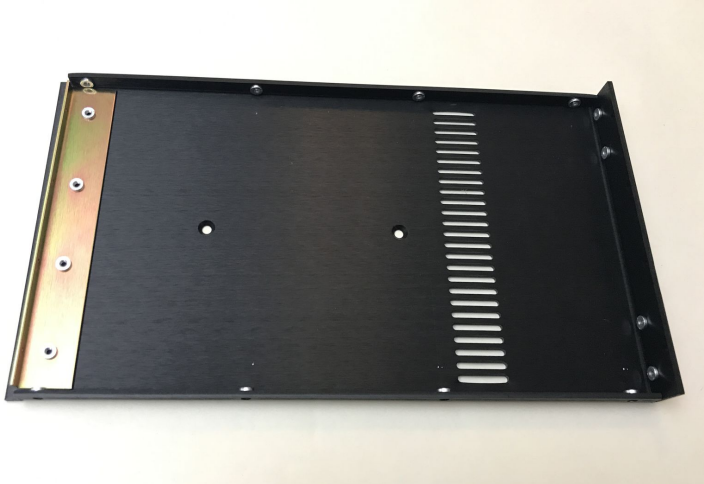




1. Attach (1) mounting bracket with (4) 6-32 5/16" black screws
2. Attach the lift bracket (may have slots in it) with (4) 6-32 3/16" black screws



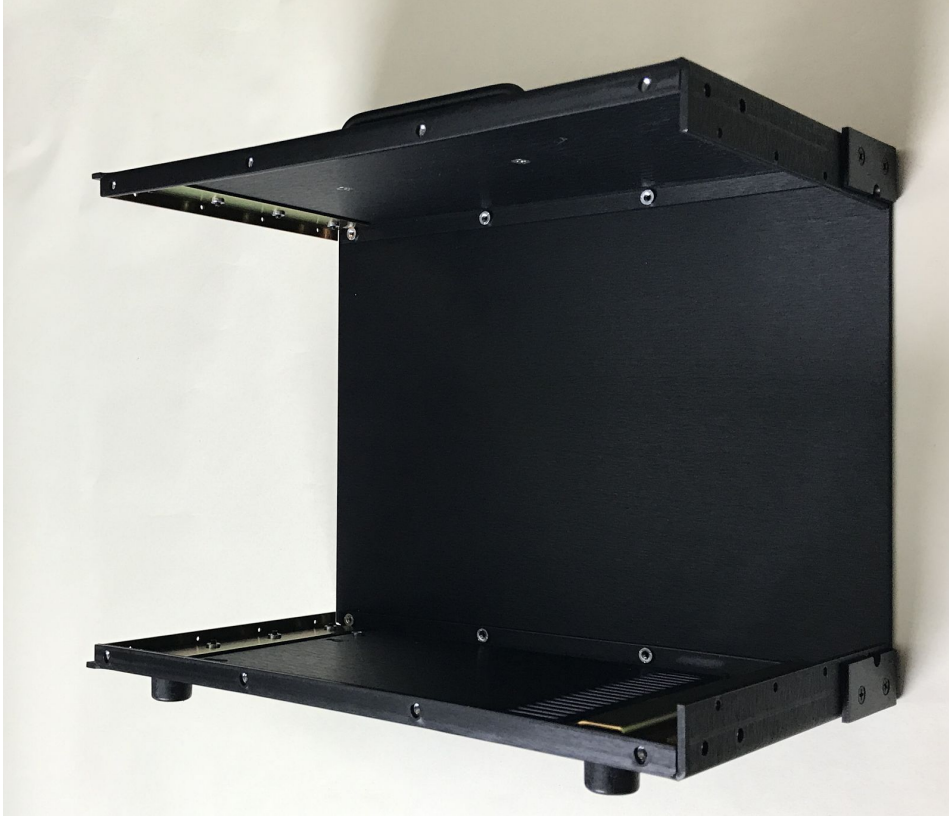
3. Attach (4) feet to the bottom of the bottom tray with (4) 6-32 3/8" pan head screws.



4. Attach mounting bracket to the bottom of the top tray with (4) 6-32 5/16" black screws

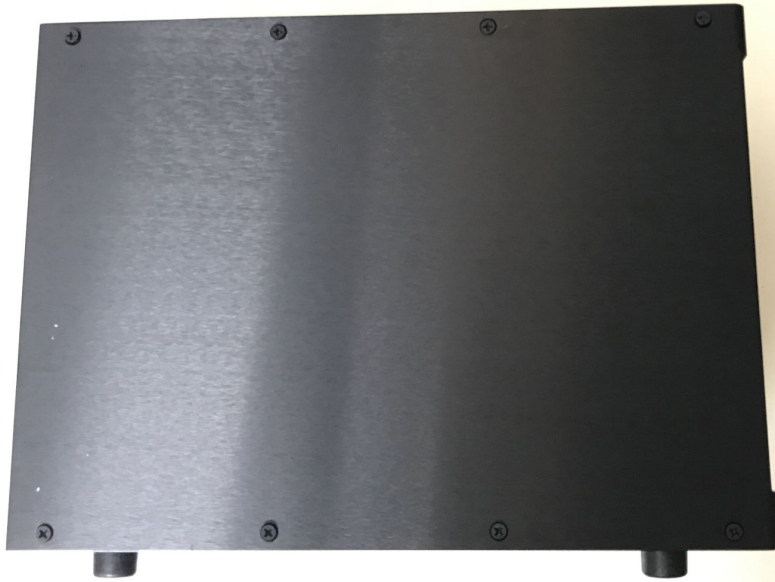


5. Attach the handle to the top of the top tray using the (2) silver 8-32 screws with lock washer



6. Place (1) side panel on a flat surface, then place the top tray into position, attaching 2 screws through the tab on the side panel.

7. Place the bottom tray into position, attaching 2 screws through the tab on the side panel.



8. Place the second side panel into position, resting on the top on bottom trays, and attach the screws through the tab in the rear to the top and bottom trays

9. LOOSELY attach the (8) screws attaching the side of the side panel, starting with the screws closest to the tab on the rear.. Once all 8 screws are threaded in, tighten them starting with the corners.

10. Flip the carrier over and repeat for the other side panel, starting by attaching all 8 screws loosely first.

# POPULATING THE CHASSIS



11. Insert module, attach top and bottom front mounting screws (hex socket head screw - different than pictured) - **DO NOT OVERTIGHTEN.**



12. Attach bottom rear mounting screw.

